

Kirkby Lonsdale and District Civic Society Newsletter: Summer 2017

IN THIS EDITION:

Your committee is changing...
...and so is this newsletter
...and maybe how you get it?
Planning process

Winter talks programme 2017/18
A request for information about a map
Rescheduled Spring Course field trip
Lost Houses – the first Lunefield
A milestone for the Middleton Milestone

Your committee is changing...

July sees the end of the school year, with sadness at farewells and excitement about the future and it feels rather like that in the Society this July. We say farewell and huge thanks to two dedicated Officers of the committee, our secretary Sue Pelter and our membership secretary Judith Manifold. Both have been highly efficient and effective in their support for the Society, Sue keeping the committee organised and Judith our 247 members (or at least their memberships). It has been a pleasure to work with them and we hope they will enjoy being 'plain members' again.

At the AGM in March we welcomed our new Treasurer Mike Butcher. For those who may not have been there, here's how Mike introduced himself:

Having lived in Kendal for the past 33 years, with a daughter who went to Queen Elizabeth as a sixth former and a wife who taught at St Mary's as a supply teacher, I think I can lay claim to having some affinity and connections with the town and its environs. I am a keen fell walker and lover of the small villages and hamlets throughout Lakeland and the Dales.

It was whilst walking, in one of the groups I belong to, that I became aware of the activities and aims of the Society. I have attended and really enjoyed many the talks that have been organised and have also helped with this year's spring course. On hearing that the Society was shortly to require a treasurer, and having previously worked for a large Insurance company in its IT department supporting their accounts system, I felt I could perhaps be a suitable candidate. After discussing this with Margaret Bunch, attending a number of committee meetings and having some excellent tutelage from David Dalgoutte, I gratefully accepted being nominated.

I look forward to getting to know many more of its members and supporters.

And we now welcome Paul Smith, very recently co-opted onto the committee.

...and so [gradually] is this newsletter...

You will notice some simple changes to this edition, such as the refreshed font, matching that now used for our website and correspondence. We are looking into different ways of producing newsletters and thinking about what sorts of articles should be in it. So if you have any suggestions or comments please let us know, contact details on page 4. Articles, news items and illustrations by members are always welcome, though we may sometimes need to edit for space.

...and maybe how you get it?

Many members now get their newsletters by E mail, and this does save us time, effort and money in posting or hand-delivering printed copies. We are happy to continue sending printed copies, but if you would be happy to move to E mail please mail klcs@cantsfield.com from your preferred E mail address. *Note we never share or pass on your details outside the Society.*

Planning process

You will probably know that one of the committee's routine activities is reviewing planning applications within the Rainbow Parish. How do we do this?

Every month a sub-committee reviews all new applications and suggests to the full committee those which merit discussion, which can be everything from a major development such as the new houses on Kendal Road to a small extension, but in a conservation area. The committee then decides whether to comment, and we should emphasise that this does not always mean 'to object'. We also write in support or suggesting alternatives, and always aim to be constructive and to clearly explain our reasons.

We were grateful recently when members drew our attention to a key application with a tight deadline, allowing us to respond in time. We are always happy to hear about anything concerning you – our contact details are on page 4 - though of course not everything will be within our remit.

Winter talks programme 2017/18

Our winter talks season opens on Monday 9th September with 'Uncovering the Past: the M6- Heysham link road' by Jeremy Bradley from Oxford Archaeology. First suggested in 1948, the 'Bay Gateway' or M6-Heysham link road was finally opened in 2016. But what was revealed during its building? Jeremy describes the important discoveries that were made during the construction.

Details of all seven talks can be found in the printed programme. We have included printed copies with printed newsletters, and electronic copies with E mailed newsletters; you can then pick up your printed copy at any talk. There is also a summary on the website, with details added before each talk: <http://www.kirkbylonsdalecivicsociety.org/talks.html>

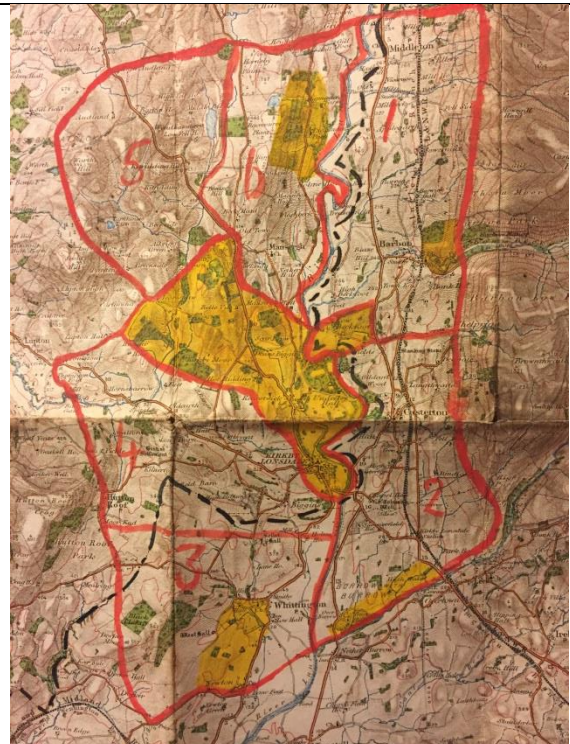
A request for information about a map

We've been contacted by Ivan Payne who writes:

I am expecting delivery of an early (1907) OS map of the wider area surrounding KL. The map appears to have been marked and annotated for some purpose - suggested Volunteer regt camp bounds or exercise area. The/my regt museum [Kings Own Regt Museum in Lancaster] would like to try and pin down an exact or at least fairly accurate date to this. Would this be something your members might have knowledge in?

Ivan's sent some pictures of the map, of which the largest scale one is shown here.

If you can help please E mail ivan.payne@btinternet.com



Rescheduled Spring Course field trip on Saturday 5th August

A reminder that 31st July is the deadline to sign up for the rescheduled field trip on Saturday 5th August. The second trip is still scheduled for 9th September; nearer the time Margaret Bunch will mail details to those who attended the Spring Course. They will also be on the website.

Lost Houses – the first Lunefield

*While enjoying the delightful Kirkby Lonsdale Open Gardens your editor was fascinated to see in one garden the last remnants of the gardens of the now-demolished Lunefield. But that wasn't the first Lunefield on that site, as this second article about lost houses by **Peter Yorke** tells us.*

The names of three significant nineteenth century houses feature in the neighbourhood of Kirkby Lonsdale: Underley Hall, The Biggins and Lunefield. In each case they came to be the centre of extensive estates in and around Kirkby and their influence on the development of the community was considerable. Of these only Underley Hall survives. The Biggins, built in 1895, suffered an extensive fire on January 1st 1943 and was never rebuilt. The first Lunefield was demolished to make way for a more impressive house. Later this second Lunefield was to be lost as well.

The first Lunefield was very much a Kirkby Lonsdale town house standing in a park of about 28 acres covering the land on the right bank of the River Lune from the Devil's Bridge towards the south-east corner of the town. This estate was bought for £5,587 in 1812 by one Roger Carus, a member of a family of some significance in this part of the country. They were a family mentioned as landowners in the reign of Edward II and as ardent royalist supporters during the Civil War. The Carus family had acquired the manor of Kirkby Lonsdale in 1558.

The first Lunefield was built in about 1815 by Roger Carus. At this time Roger's elder brother bore the names William Wilson, assuming the name Wilson because of their father's marriage into the equally influential local family of Wilsons who owned lands in Casterton and elsewhere. On the inheritance of some of these Casterton lands Roger's brother added Wilson as an extra surname and moved into Casterton Old Hall. He was later to build Casterton Hall and was the father of the Carus Wilson who founded the Clergy Daughters School at Casterton in 1823.

The name Lunefield Drive will still be noticed by those who enter Kirkby by turning off the A65 on to Main Street and serves to remind those whose memories of the town go back to the 1950s of the fine house built in 1869 that was demolished in 1958. However, before exploring the history of that house in a future article it is necessary to consider the earlier house bearing the same name which stood more or less in the same part of Kirkby.

Access to the old Lunefield estate from Main Street was from where Lunefield Drive now is and then by a bridge over the present footpath leading to the Devil's Bridge. There was also a drive from the Devil's Bridge leading upstream on the west bank of the Lune before bearing left across the Lunefield Park towards the house. Since the old way into the town from the Devil's Bridge was along the river to Mill Brow this route is only to be expected. Jingling Lane, an interesting feature of this part of Kirkby, also provided private access from the house into the town. The name "jingling" is generally understood to have been given because at certain places the ground rings when stamped upon. The discovery of an underground passage in the 1860s suggests that at an earlier date a drainage tunnel from the town had been constructed and might have caused the noise. There is also a reference in the Lonsdale Magazine of 1821 perhaps providing further proof of problems of drainage from the town which affected Lunefield: "There is a curious phenomenon

worthy of notice in this place. The cellars themselves are perfectly dry, but close under the dining room windows in very wet weather the ground swells in two places, sometimes to a height of two feet, then bursts, and a copious stream issues and continues to run for several hours.”

There are few records existing of the years when the Carus family occupied Lunefield. After the death of Roger Carus in 1855 the Carus family sold Lunefield to Alfred Harris of Bradford for £7,500. He pulled the house down and in 1869 built the second Lunefield that is still remembered.

A milestone for the Middleton Milestone

You may have heard about the relocation of the Roman milestone found in a field in Middleton in 1836. Its inscription reads **M P LIII** which stands for **Milia Passuum LIII** or 53 Roman miles, about the distance to Carlisle (Luguvalium), a Roman mile being a little shorter than a modern one.

The milestone is a scheduled monument and on the Historic England 2016 ‘At Risk’ list. The risk is described as ‘extensive stock erosion’ and it actually fell over in 2014. To prevent further damage and deterioration it was moved into the churchyard of Middleton Holy Ghost where it will become the focus of new displays about the Romans in Lunesdale.

The District Church Council and Yorkshire Dales National Park Ranger Service have now been nominated for a 2017 Historic England Angels Award in recognition of their work in preserving this important piece of local history. The winners will be announced in November so fingers crossed.
[\(https://historicengland.org.uk/get-involved/angel-awards/\)](https://historicengland.org.uk/get-involved/angel-awards/)



Contact us

If you want to get in touch, please E mail klcs@cantsfield.com or phone the Chairman, Anne Burgess, on 015242 72463

And finally. If you've visitors to entertain this summer why not take them on a Blue Badge guided walk around Kirkby: highly recommended by several members. See www.kirkbylonsdale.co.uk

This edition was edited by Anne Burgess with thanks to all our contributors. The views expressed are those of the contributors and do not necessarily reflect those of the Civic Society Committee and its members as a whole.